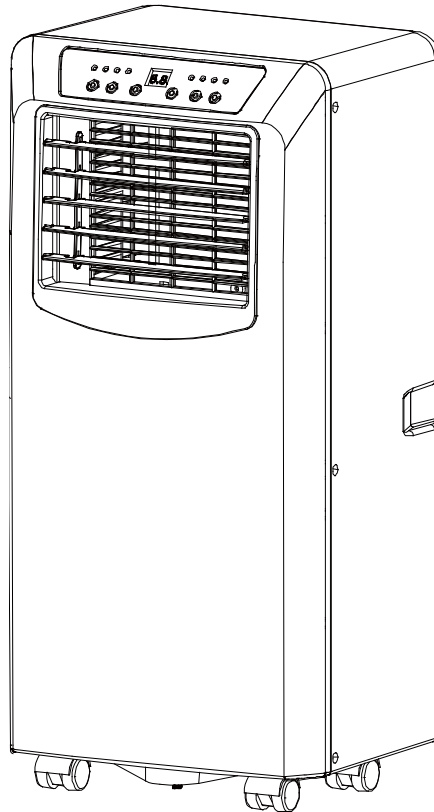


SERVICE MANUAL



A007B

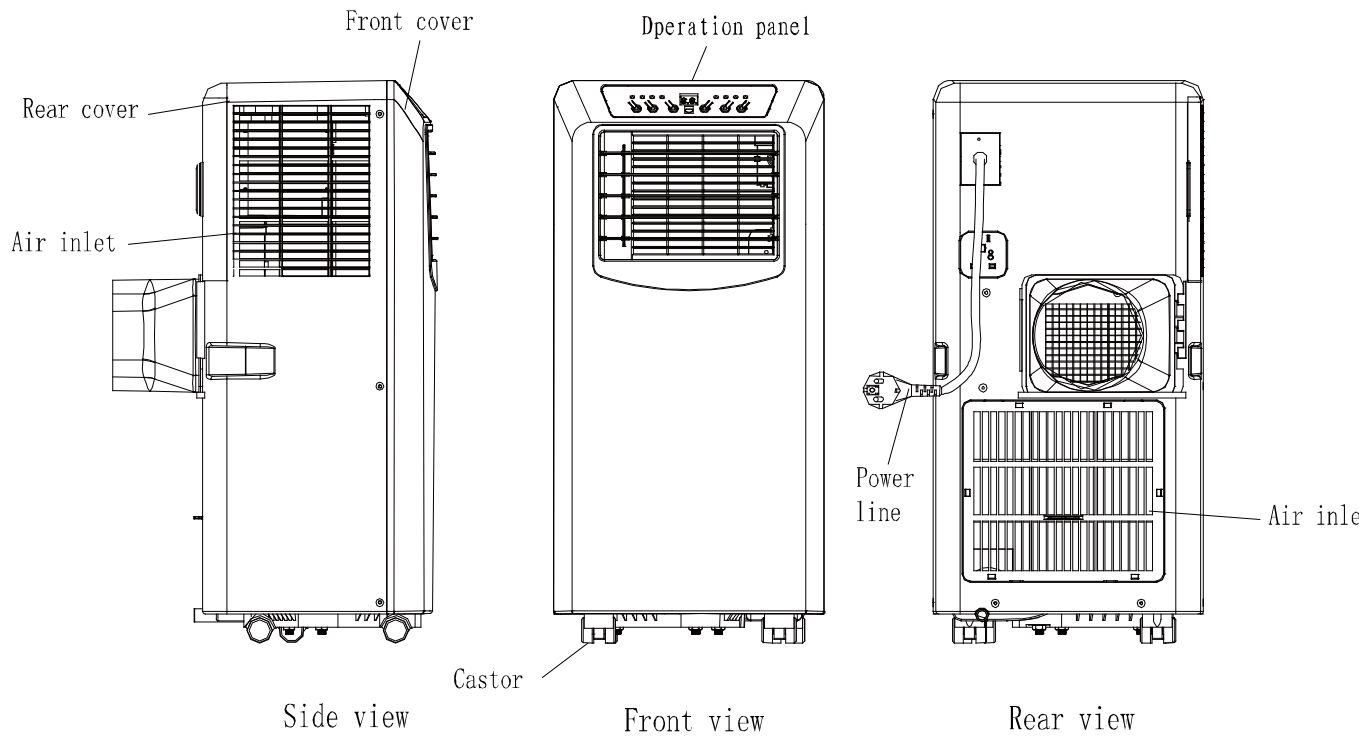
1. Any maintenance for this machine must be done by professional serviceman.
2. Please make sure the machine is power-off, and power plug is pulled out before maintenance and repair.

Important Safety Instructions

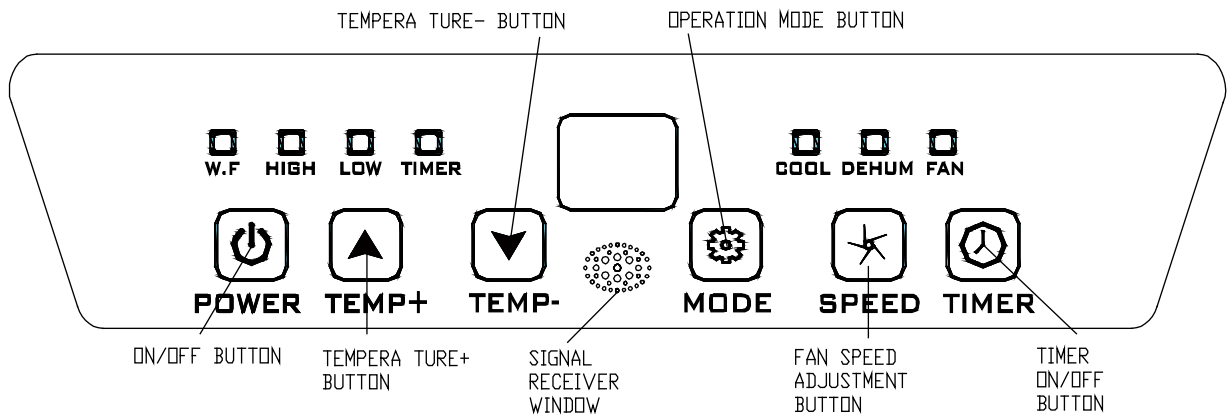
1. Read all instructions and keep for future reference.
2. This air conditioner must always be used, stored and transported upright.
3. After being transported, the unit should be stood upright for a few hours (at least 6 hours recommended) before being turned on. This time allows the compressor contents to settle sufficiently.
4. This appliance is not intended for use by persons (including children) with reduced physical, sensory or mental capabilities, or lack of experience and knowledge, unless they have been given supervision or instruction concerning use of the appliance by a person responsible for their safety.
5. Young children should be supervised to ensure that they do not play with the appliance.
6. Always unplug the appliance from the mains when not in use.
7. Disconnect the power plug before attaching or removing accessories, and before cleaning.
8. To disconnect the appliance, turn it off, then unplug from the mains.
9. To unplug the appliance, always grasp the plug; do not pull the cord.
10. If the supply cord is damaged it must be replaced before further use by the manufacturer, its service agent or a similarly qualified person in order to avoid a hazard.
11. Do not use outdoors. This appliance is designed for indoor household use only.
12. Place the power cable away from areas where people walk so that it cannot be stepped on or tripped over.
13. Always use the appliance on a flat, stable surface.
14. Do not cover during operation

15. Do not use or store the appliance where it may be exposed to water or any liquids. Do not use in or near a bathroom or laundry, near open windows, near a swimming pool etc.
16. Never clean this appliance when it is plugged in. Do not immerse it in water. Clean the outside surface with a damp cloth or soft brush and dry with a soft dry cloth.
17. Use the appliance only as directed in this manual. Misuse could void your warranty.
18. Avoid contact with moving parts; never insert any body parts or other objects into the unit whilst it is plugged into the mains, and especially when it is in operation.
19. Do not place the unit or any parts near an open flame, cooking or other heating appliances, or where oil could spill on it.
20. The power plug must be readily accessible during operation of the unit, in case of emergency.
21. The unit must not be used without the Exhaust Hose Pipe correctly installed as described in this manual.
22. Use the unit only for its intended purpose.
23. Do not use this unit with an extension cord unless the cord is approved for use by a qualified electrician or electrical supplier.
24. Never use the power plug as a means to switch off the air conditioner. Always turn off the unit with its control panel / remote control before pulling out the power plug.
25. After turning off the air conditioner, please wait at least 3 minutes before turning it back on, to maintain the compressor's operating lifespan.

Parts Name



Operation Methods



Common Trouble Shooting

When trouble happened, don't get panicky and take apart the machine without

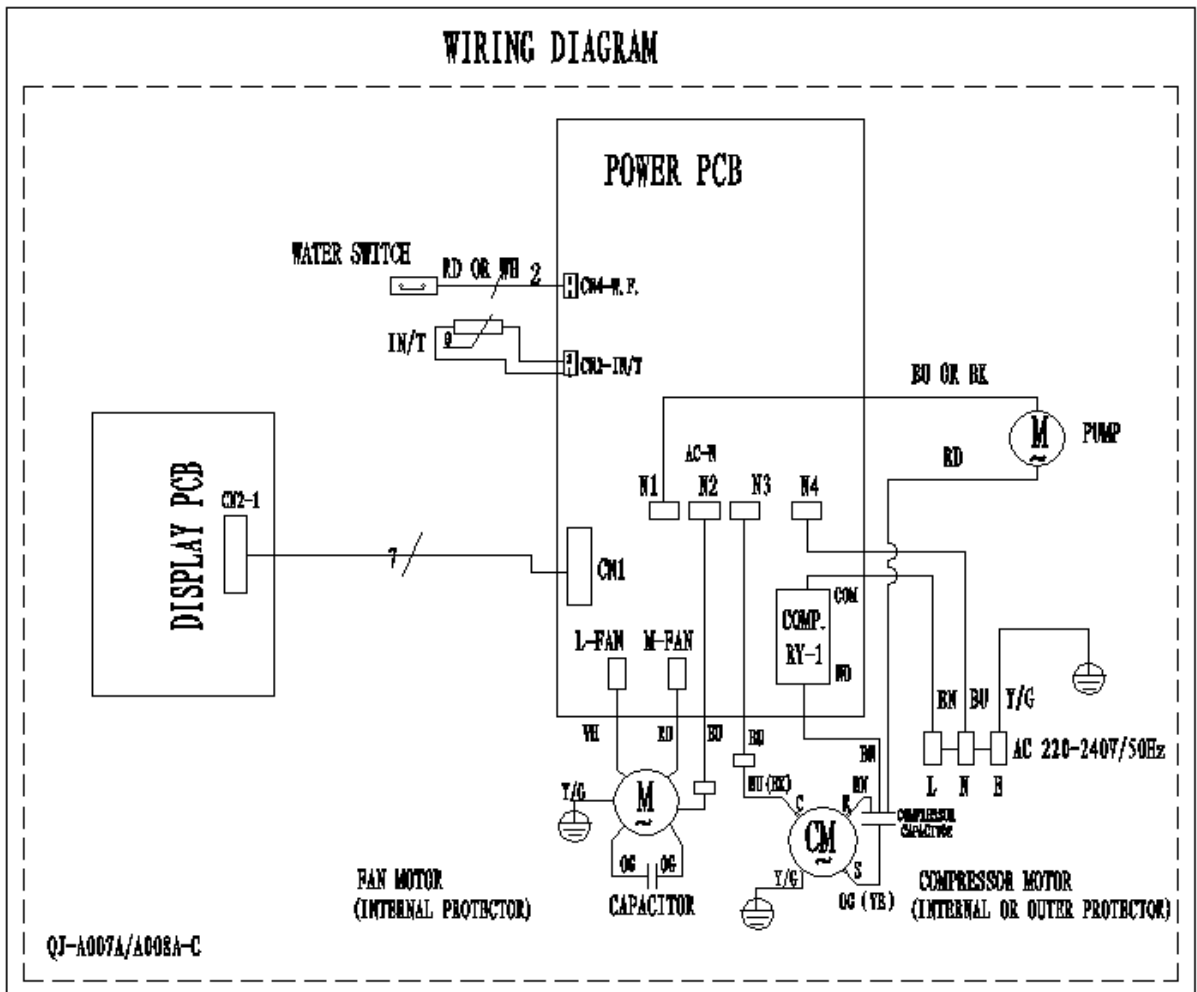
any analysis, otherwise some unnecessary damages will be caused. Please deal with the trouble as following to find a correct solution. Any repairing and operating, only the serviceman can work on the repairs, and remember to use electricity safely.

Troubles	Possible Causes	Suggested Remedies
1. Unit does not start when pressing ON/OFF button	- Water full indicator lamp blinks, and water tank is full.	Dump the water out of the water tank.
	- Room temperature is higher than the setting temperature. (Electric heating mode)	Reset the temperature
	- Room temperature is lower than the setting temperature. (Cooling mode)	Reset the temperature
2. when the aircon without power	- the power is not available	Check the circuit, and confirm the mains input.
	-the control panel and the power panel are not connect	Detach the front panel, and reconnect the wire harness.
	-the controller without power	Detach the circuit, and check the relay's power supply, check the wire harness. And confirm the wiring are not loosen.
	-the controller has damaged	Change the same standard electronical component, or change the same standard controller.
3. Not cool enough	- The doors or windows are not closed.	Make sure all the windows and doors are closed.
	- There are heat sources inside the room.	Remove the heat sources if possible
	- Exhaust air hose is not connected or blocked.	Connect or clean the exhaust air hose.
	- Temperature setting is too high.	Reset the temperature
	- Air inlet is blocked.	Air inlet is blocked.
4 、 not heat enough	- The doors or windows are not closed.	Make sure all the windows and doors are closed.
	- Exhaust air hose is not connected or blocked.	Connect or clean the exhaust air hose.
	- Temperature setting is too low	Reset the temperature

	- Air inlet is blocked.	Air inlet is blocked.
5、it can not cooling or heating	-the compressor is not working	Detach the front and back panel,A、 check the wire of the compressor if loose or not, if so, pls replug it. B、 Using the multimeter to measure the capitor for the compressor if damaged or not, if so, It need to change the capitor
	-the compressor are working, but the aircon cannot cooling/heating	without refrigerant, detach the front and back panel, check it by your eyes or your hands, and find the leak point of the gas, firstly, use the tong to cut the end capping of the process tube, if confirm without the refrigeration, soldering or change the channel of the leak point(generally speaking, the leak point of the channel which included process tube, the weld for tee strainer, entrance of the condenser and the U-shape place of the compressor high/low-voltage tube), meanwhile, after replacing the process tube by the needle valve, and use vacuum, then according to the charge amount of the refrigerant listed in the rating label and fluoridize
6. Noisy	- The ground is not level or not flat enough	Place the unit on a flat, level ground if possible
	- The sound comes from the flowing of the refrigerant inside the air conditioner	It is normal.
	- touch tube	Detach the front pannel, adjust the location of the capillary, process tube and the exhaust-pip's spring shock, to make room for

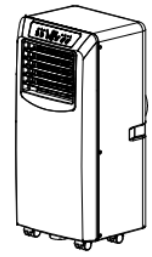
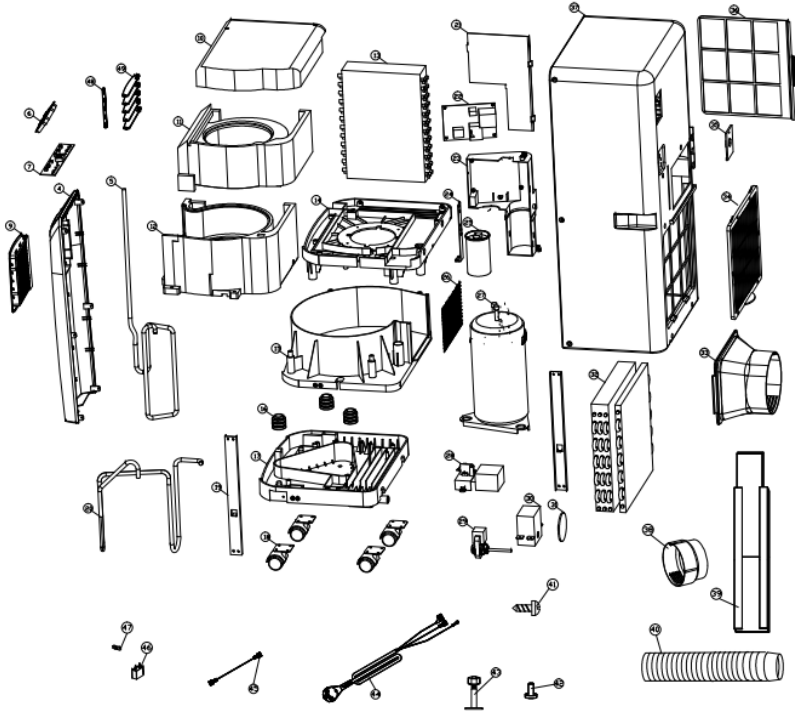
		them between 5-8m, and set up the front panel again.
	-allophone of the under air fuel	Detach the front&back panel, the condenser and the cover of container, to check the bolt in the fan wheel, if they are loose, then retighten them. Meanwhile, check the fan wheel, if it is damaged, it needs to be replaced.
	- allophone of the up air fuel	Detach the front&back panel, check the fan wheel, if it is loose or damaged, it needs to be retightened or replaced.
7. E0 Code	-the terminals of the sensor failed to connect	Detach the front panel and reconnect the sensor.
	-Room temperature sensor failed	Replace room temperature sensor (the unit can also work without replacement.)
7. E2 Code	-water full	re-up electricity and open the unit, the aircon will be restored.
	Water pump failed.	- Restart the unit, and the failure may disappear. - Replace water pump.
8. water leak	-the hole leak in the cover of container is jammed	-detach the back panel, remove the sundries in the hole leak, keep it unobstructed.
	-the trough leak in the supplying fan motor valve is jammed.	- detach the front&back panel, remove the dust, keep it unobstructed.

Wiring Diagram



Explosive View

**A007B used by electronic mobile
air conditioning blast figure**



16	compressor rubber pad	32	condenser	48	horizontal panhine leaf connecting rod	64	
15	scroll casing pedestal	31	pump wheel	47	cord grip	63	
14	scroll casing cover board	30	shaded pole motor box	46	motor capacitor	62	
13	evaporator	29	shaded pole motor	45	wiring	61	
12	downdraft dust foam	28	micro switch	44	power cord	60	
11	updraft dust foam	27	compressor	43	bolt (with nut)	59	
10	top foam	26	wire netting	42	stopper	58	
9	venting frame	25	compressor capacitor	41	screw	57	
8		24	pc board support bar	40	flexible exhaust hose	56	
7	display PCB	23	pc board box	39	winder kit	55	
6	control panel	22	power panel	38	exhaust adapter	54	
5	low-voltage tube	21	pc board cover board	37	back panel	53	
4	front panel	20	high-voltage tube	36	dust screen	52	
3		19	support bar	35	base cover of power cord	51	
2		18	flexible wheel	34	grating cover	50	
1		17	under pan	33	flexible exhaust hose connector	49	Horizontal panhine leaf